

MONTHLY MEMBERSHIP PROGRESS REPORT

District 321 E

Results as of: 11/30/2019

GMT:

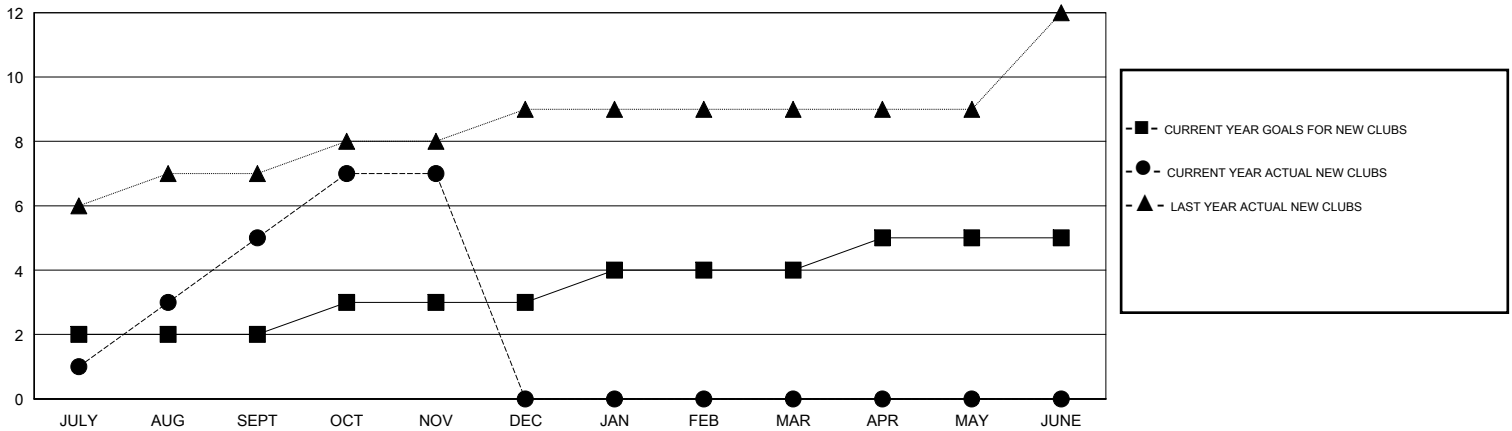
LOCATION INDIA

GMT CA

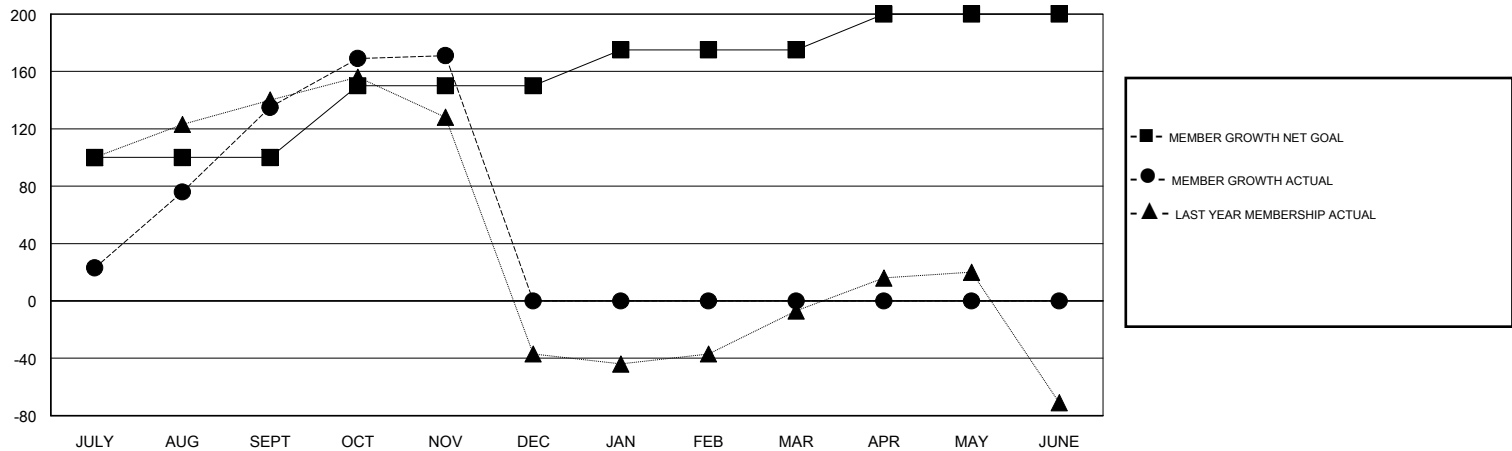
Clubs			
RESULTS FOR 2019-2020			
QUARTER	NEW CLUB GOAL	NEW CLUBS	DROPPED CLUBS
JULY/AUG/SEPT	2	5	0
OCT/NOV/DEC	1	2	0
JAN/FEB/MAR	1	0	0
APR/MAY/JUNE	1	0	0

Members			
RESULTS FOR 2019-2020			
QUARTER	MEMBER GROWTH NET GOAL	MEMBER GROWTH ACTUAL	DROPPED MEMBERS ACTUAL (including transfers)
JULY/AUG/SEPT	100	208	60
OCT/NOV/DEC	50	65	24
JAN/FEB/MAR	25	0	0
APR/MAY/JUNE	25	0	0

GOALS AND ACTUAL NEW CLUBS CUMULATIVE



GOALS AND ACTUAL MEMBERS CUMULATIVE



DROPPED CLUBS: 0	31 CLUBS OF 89 ADDED 1 OR MORE NEW MEMBERS	GENDER DISTRIBUTION MALE 1,990 (64.11%) FEMALE 1,114 (35.89%)
DROPPED MEMBERS DECEASED 5 CLUB CANCELLED 0 OTHER 79 <hr/> TOTAL 84	CLICK HERE FOR CUMULATIVE MEMBERSHIP DATA	TOTAL FAMILY UNIT MEMBERS 2,143 FAMILY MEMBERS PAYING HALF DUES 1,276